



User Manual



## Packing List

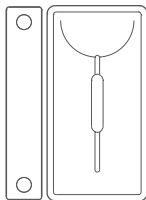
Please confirm the items are in good conditions as below



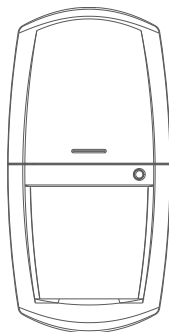
SmartONE x1



Wireless Key Fob  
Remote x1



Wireless Door Sensor  
x1

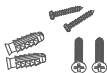


Wireless Motion Sensor  
x1

Infrared  
Installation  
Accessory



Bracket base  
x1



Screw x2  
Bolt x4



AA Battery x3

Wireless Door  
Sensor Installation  
Accessory



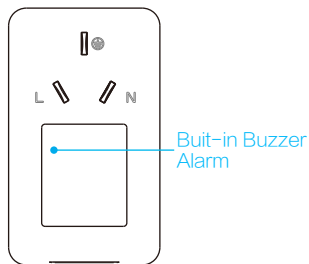
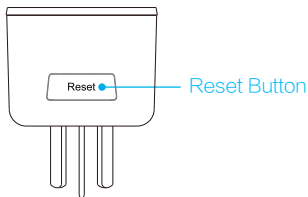
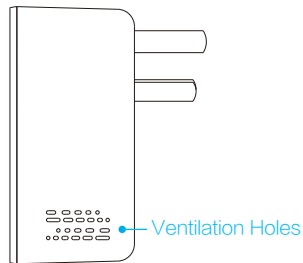
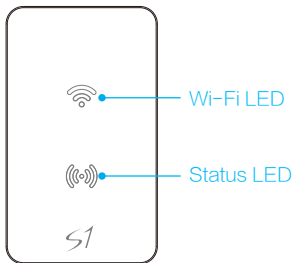
3M Adhesive Lable  
x2



Screw x2  
Bolt x4



Guide Card x1

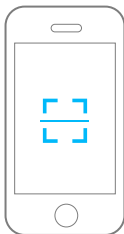
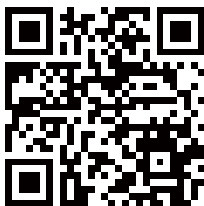


\* Device Reset - Long press the reset button for more than 6 seconds until the Wi-Fi LED is blinking rapidly

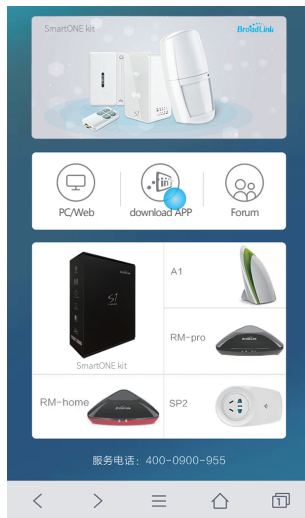


# e-Control APP User Guide

## Step1 Download the e-Control APP



Scan QR code to download



Page1

**A:** Scan QR code from the packing box or the user manual to download and install the APP.

**B:** Visit [www.ibroadlink.com](http://www.ibroadlink.com) using your mobile browser and tap Download APP as shown on Page1 above.

## Step2 Configure the Device

### Configuration Mode

Ensure the Wi-Fi LED is blinking rapidly about 5-6 times per sec



SmartONE



Plug into the power outlet



Wi-Fi Router



Smart Phone

Connect to Wi-Fi



e-Control

Open e-Control APP

## Step3 Configure the Device

Cancel Add device

Enter your Wi-Fi password to configure the devices.

V1 Devices V2 Devices

broadlink\_UX

Enter WiFi Password

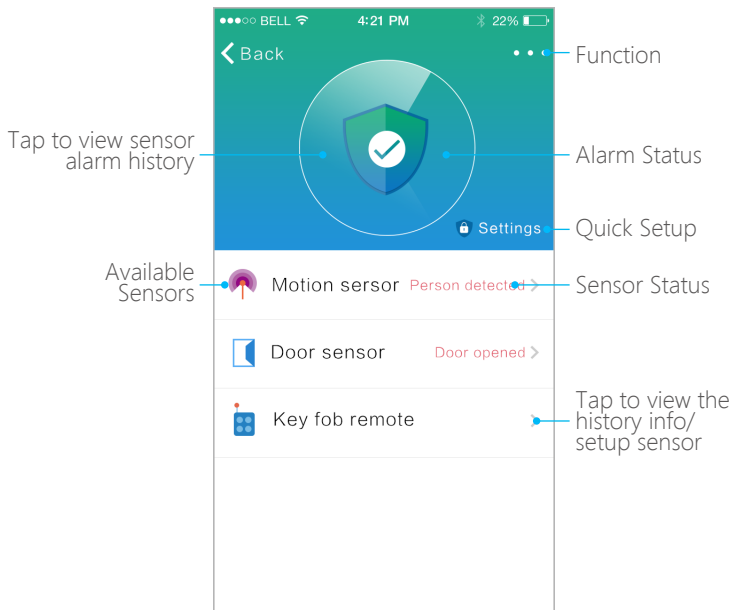
Configure

Enter the Wi-Fi user name

Enter the password

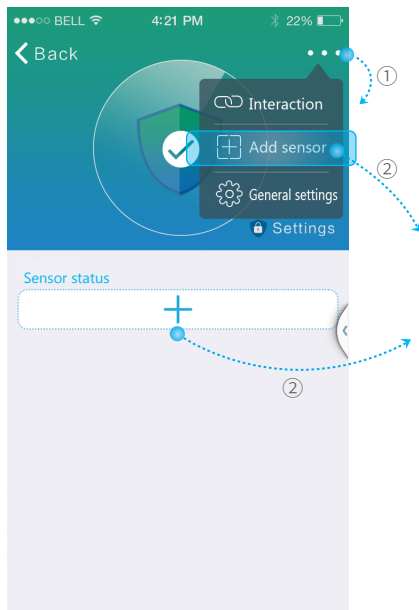
\* If the configuration is failed, please refer to Page14

## Step4 Start to experience

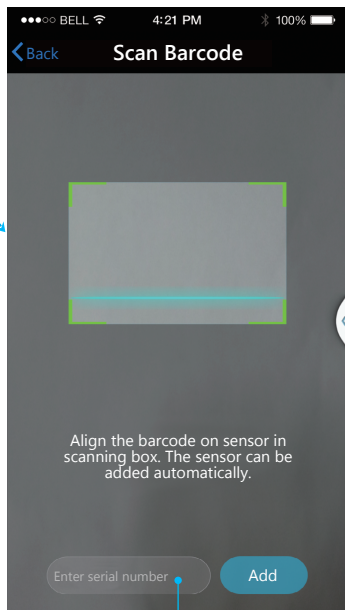


Device Control Panel

## e-Control APP Add Sensor



Add sensor as shown on the page above



Please scan QR code, or manually enter serial number

vendor name  
 \*\*\*\*\*company  
 Sensor type  
 Wireless Door Sensor  
 Sensor ID  
 088888880  
 Part-arm

Enable by default

▲ Sensor Info Page

< Back    Sensor definition    Save

Name	Door sensor
Type	Door sensor
Zone	Living room
Attach to	Door

Tap to change  
senor name

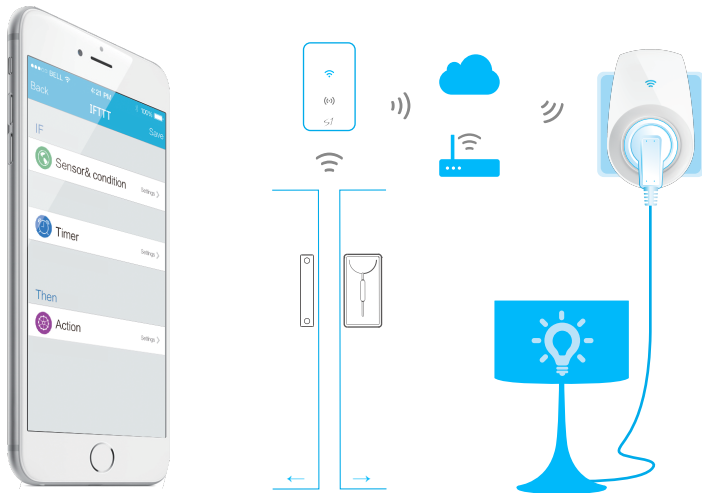
Tap to select  
the location

Tap to select the  
installation site

▲ Sensor Settings

## e-Control APP IFTTT Style Interaction

Users can DIY various ways for smart home control. Devices will operate automatically after setting when the conditions are triggered. IFTTT simply enables you to enjoy the real unattended smart home such as the situation as “Turn on the warm lights once the door of your house is opened”.

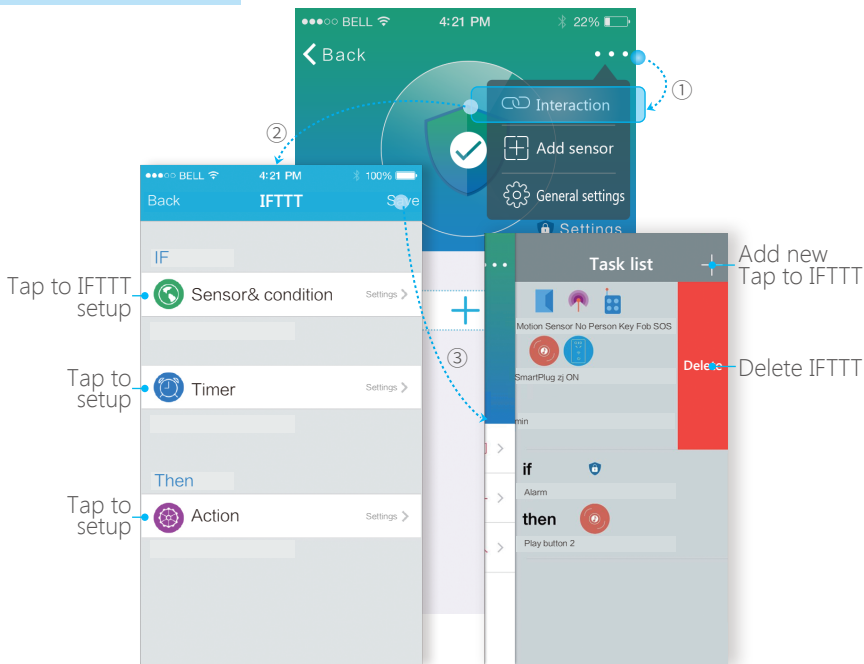


### If Living room - [Door sensor](Open), then [Smart plug] - Desk Lamp (On)

( ) is the condition to be triggered or action to be performed.

[ ] is the BroadLink brand or Broadlink DNA products.

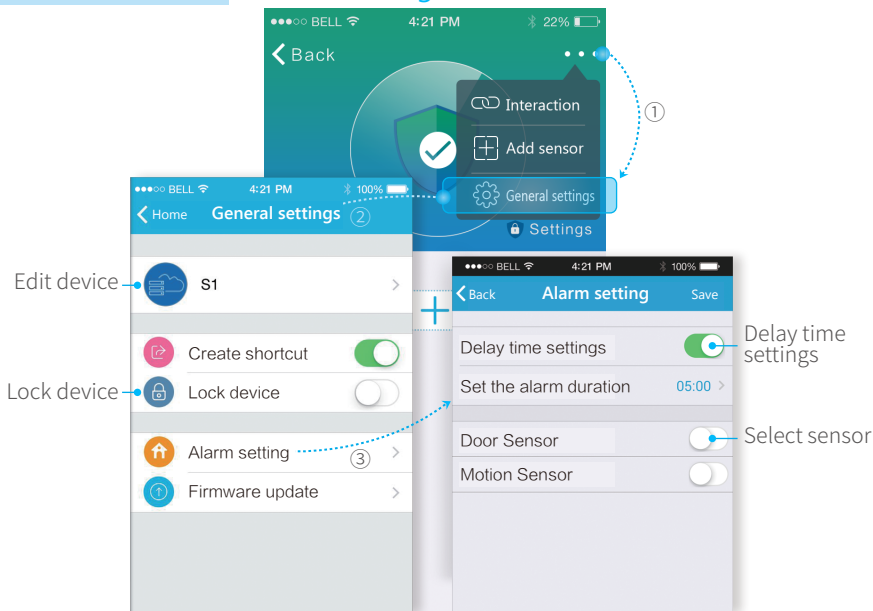
When adding IFTTT, make sure all the sensors added to WLAN should have Internet access, otherwise the IFTTT scene cannot be uploaded to the server and loaded from the sensor.



Enter IFTTT page as shown above, and setup according to the APP tip, then tap save.  
(SmartONE supports max 16 groups of IFTTT with 6 conditions and 8 actions for each group)



## e-Control APP General Settings

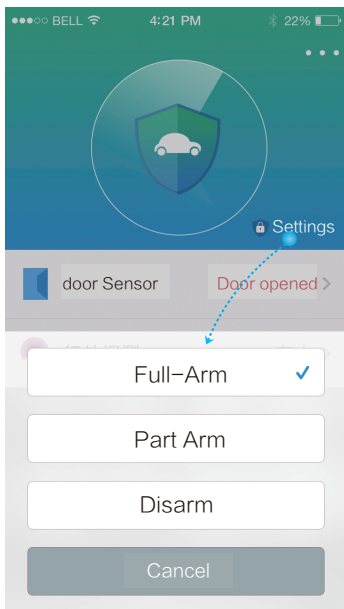


**Edit Device** Tap to change the icon and name

**Lock Device** Prevent your devices from being detected and operated by other smartphone users in the same WLAN.

**Delay time settings** Setup the delay time for "Full/Part Arm" .

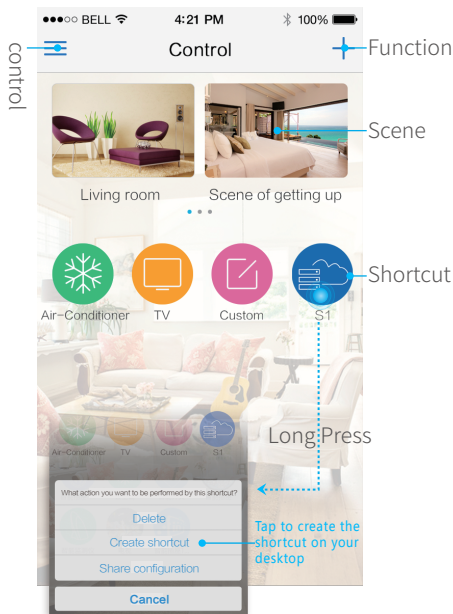
**Select the sensor** Select the sensors enabled in "Part Arm" mode.



**Full-Arm** Default the situation in which all the sensors will be involved in alarm.

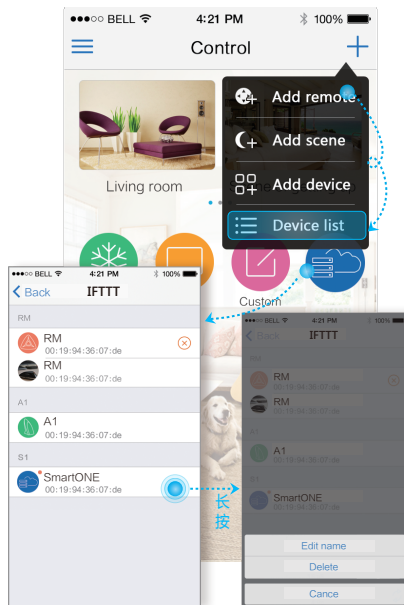
**Part-Arm** Select sensors needed to be involved in alarm on the alarm setting Page (P12).

( Wireless key fob remote can simply setup without Smartphone )



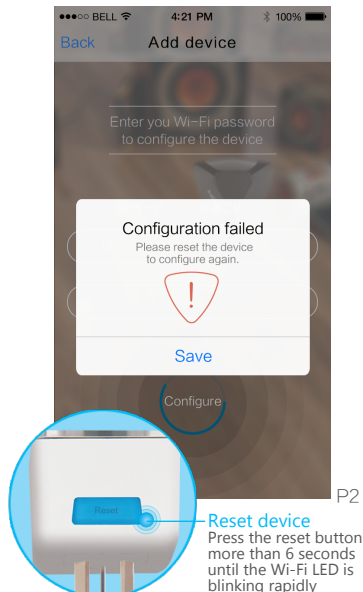
Enter Control page for more operations

## Search/Edit Device



- New device New device added;
- Offline The device is offline, unable to control, please check your network connection

## Configuration Failed



P2

### Reset device

Press the reset button more than 6 seconds until the Wi-Fi LED is blinking rapidly

- If APP shows the page 2 as above when Wi-Fi light keep flashing slowly, and device configuration failed, please reset device and reconfigure (Repeat Step 3).
- If the configuration shows other problems, please contact customer service staff for help.

