

F21-2S/2D/4S/4SB/4D/E1/E1B

Software User manual



F21 series
remote control



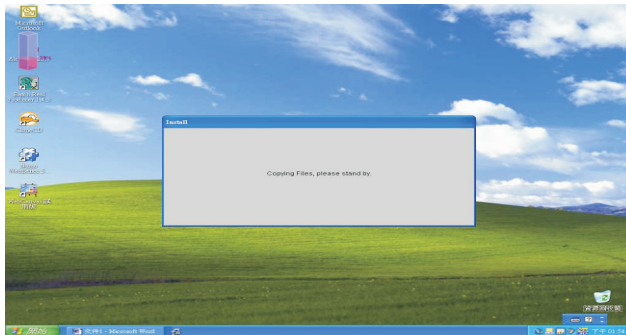
I Installation

1-1. Put the CD in CD-ROM driver, then it will install automatically.

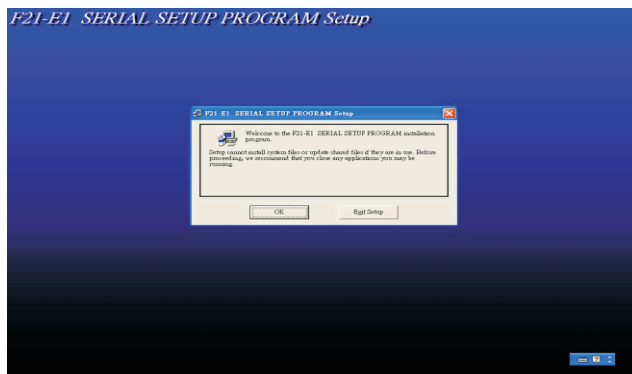
Note: If it is not installed automatically, please open the software f21_v220.exe from the computer

1-1-1. Steps:

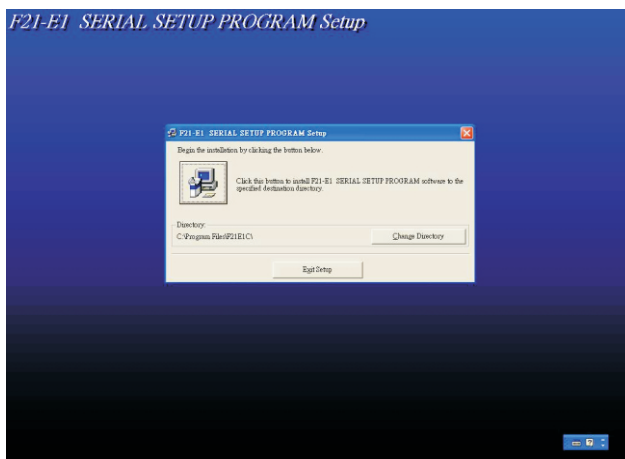
a. Show necessary install documents



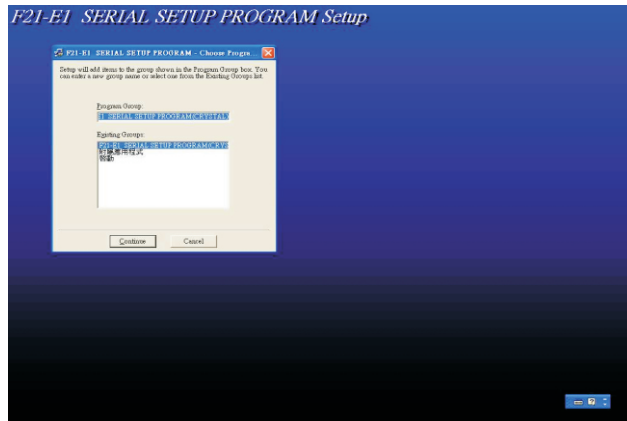
b. Click "OK" to next step



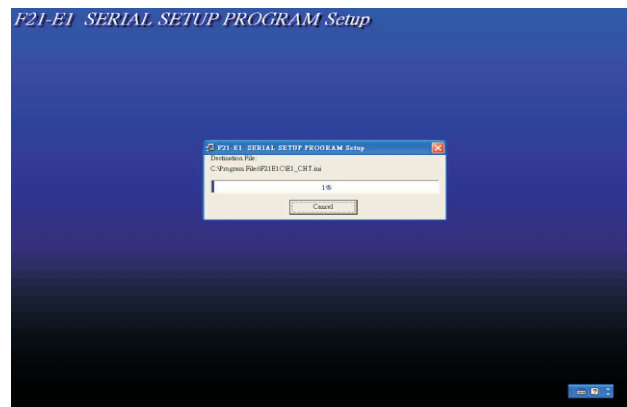
c. Click  choose file path



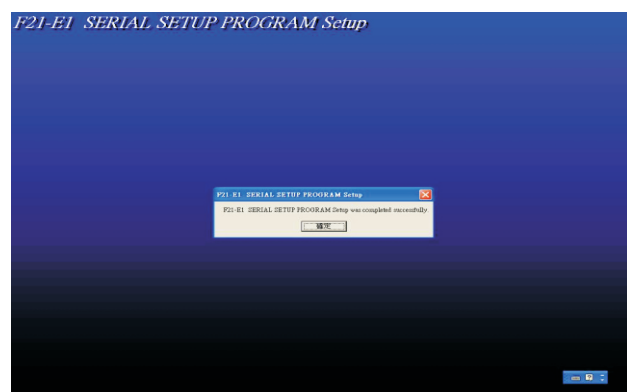
d. Choose program group , Click”Continue”



e. It is coping all installation files, please wait.



f. Then installation is finished.

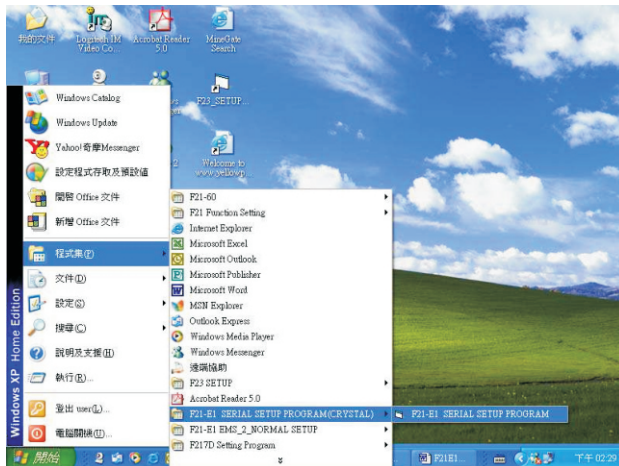


1-2. Notes :

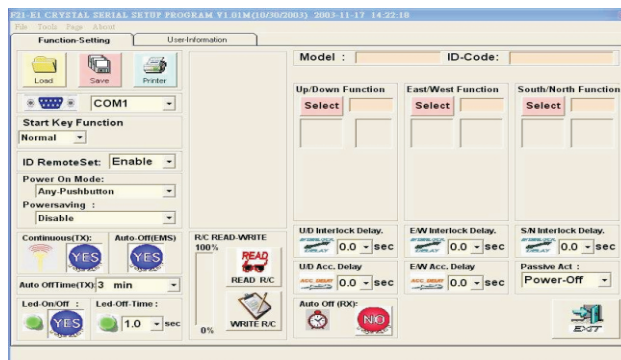
- a. Close the transmitter and receiver power.
- b. Before programing, please connect products and computer with the data cable and confirm they connected correctly.
- d. In first use, you must choose correct COM PORT in USB for the program.
 - e. g. COM4 or COM5.
- e. All functions are chose by left click. After choosing all functions, you must write the program into the products.
- f. During programing, please do not put out the date cable.

II. Program functions

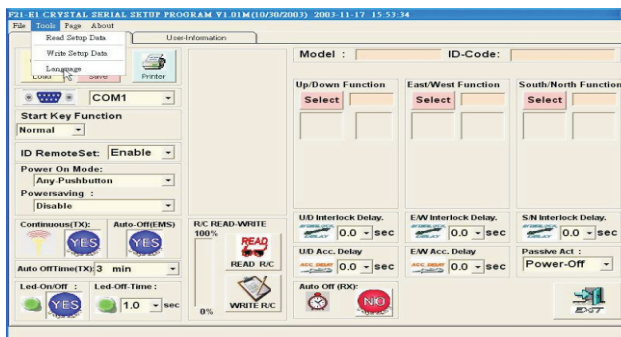
2-1. Choose 'START'-PROGRAM-" F21-E1 SERIAL SETUP PROGRAM(CRYSTAL)-" F21-E1 SERIAL SETUP PROGRAM (CRYSTAL).



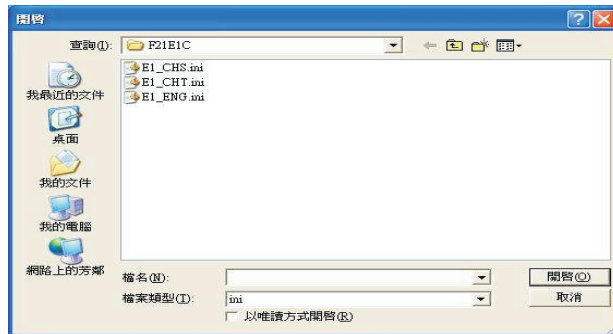
2-2. In main manue of program.



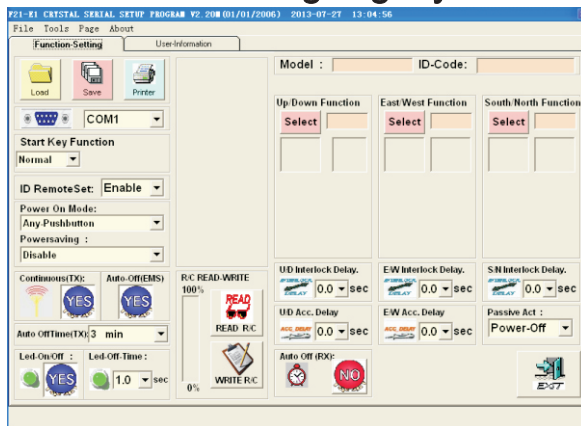
2-3. -"Tools"- "Language" to change language.



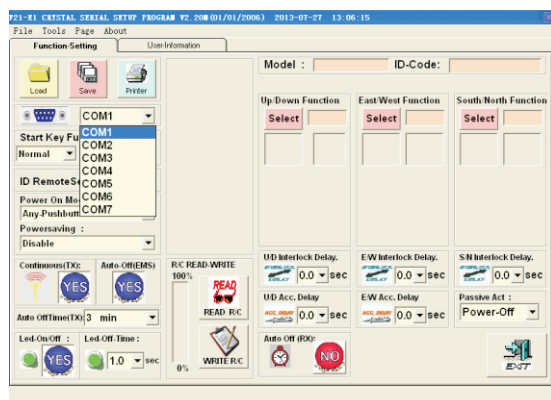
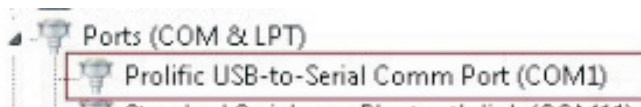
2-4. E1_ENG- English



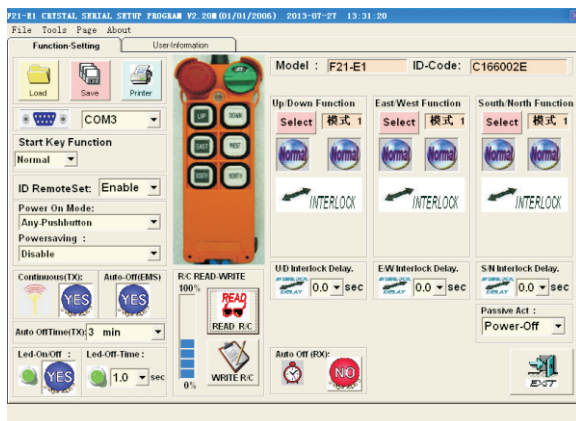
2-5. Then into the language you choose.



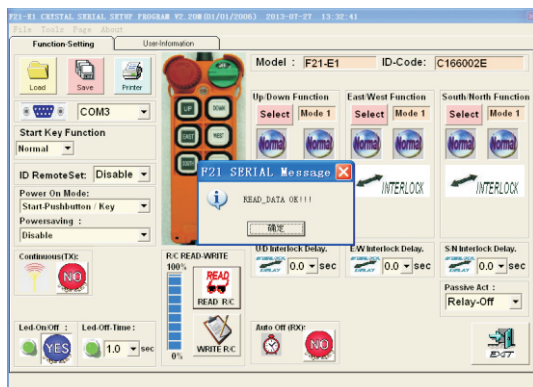
2-6. Please choose the correct date cable port (COM PORT). My computer-Property-Hardware-Device Manager-Port. Then find the Prolific USB-to-Serial Com Port port. In following drawing, it is COM1



2-7. After correct connection, click"READ",



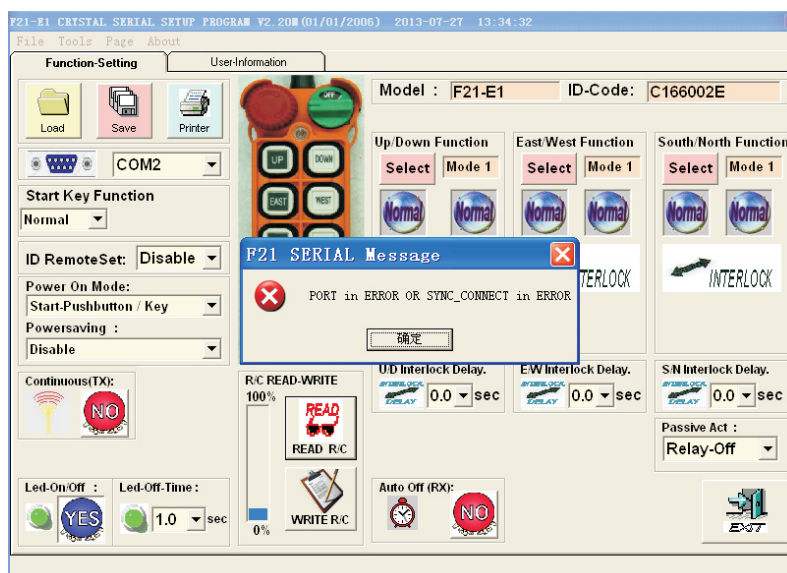
2-8. After reading, it show "READ_DATA OK", Then click"确定"



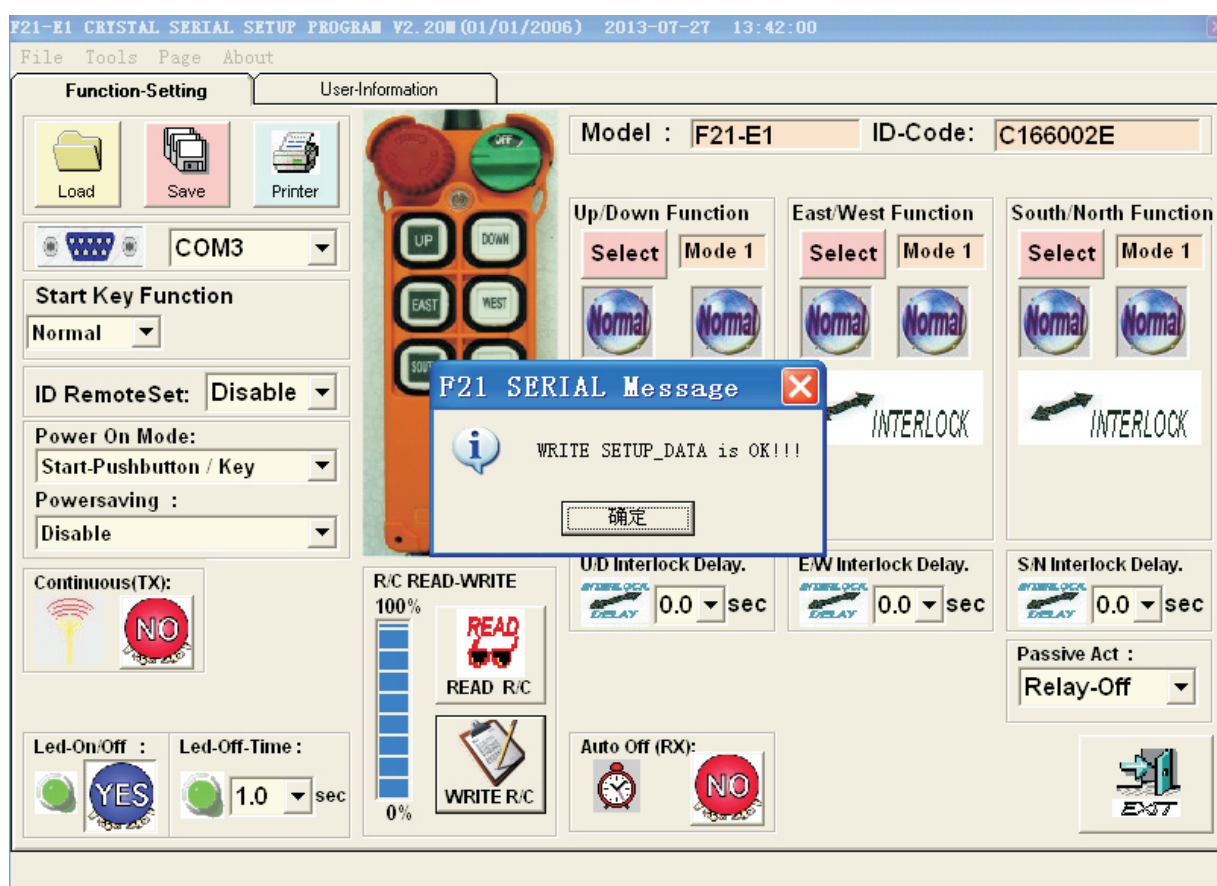
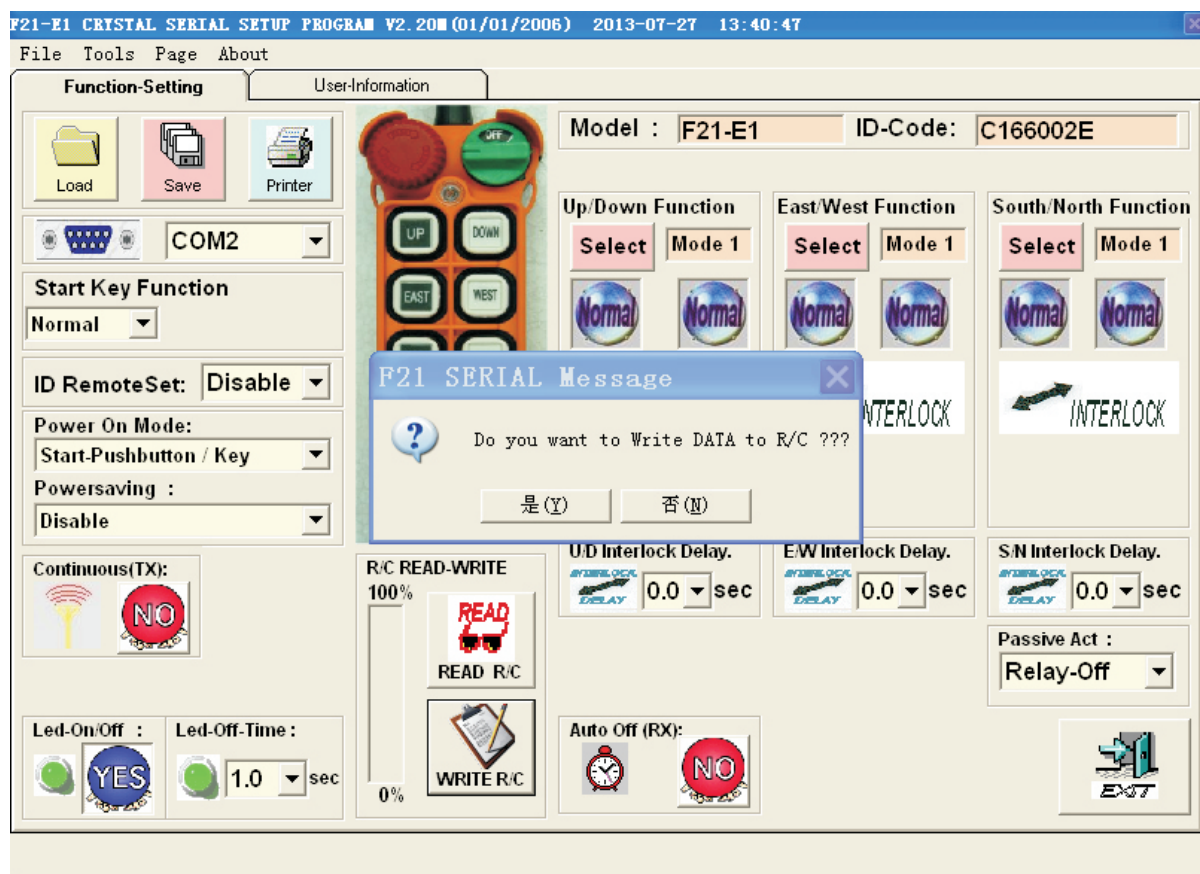
2-9. "PORT in ERROR OR SYNC_CONNECT in ERROR"

Problems:

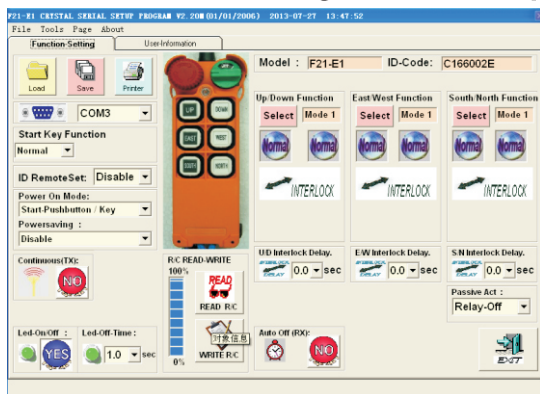
- a. Computer port COM-PORT is wrong
- d.Data cable error
- b.Data cable is missing
- f.receiver error
- e.transmitter error
- c. Data cable is loose



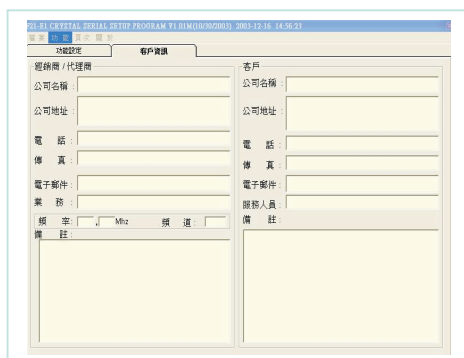
2-10. After reading out, choose the function you need, then click "WRITE R/C", to write in the data.



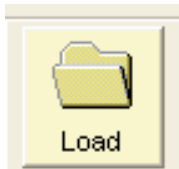
- 2-13. "file": "LOAD", "SAVE", "PRINTER"和
"EXIT".
- 2-14. "TOOL": "READ SETUP DATA", "WIRTE SETUP DATA
&"LANGUAGE".
- 2-15. "Page, to choose SETUP-PAGE.
- 2-16. "About", to know program version.
- 2-17. "Function-setting", to set up functions



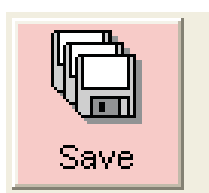
- 2-18. "User-information", to read or write user information



- 2-19. "LOAD" to open saved file.



- 2-20. "SAVE", to save file.



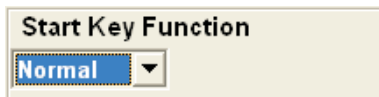
2-21. "PRINTER" to print.



2-22. "PORT" to choose computer USB work port.



2-23. "Start key function"-"Normal", "toggle", "inching" or "E stop".

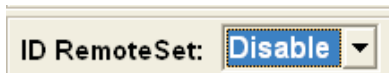


- a. "Normal", when press button, relay ON. When release button, relay OFF.
For Rotary switch, when "START", relay ON. When "OFF", relay OFF.
- b. "Toggle". When press and release button, relay ON, When press and release it again, relay OFF.

c. "Inching". Certain relay need brief ON. The period can be set between 0.05~0.8. Press this button first (For rotary switch, put it "START") and do not release, Then press other buttons, the according relay ON during set time.

d. "E stop": Only F21-2S/2D is with such function. If the START button is set "E STOP", then any button to start. If not, it can set to other function and magnetic key is STOP function.

2-24. "ID Remote Set"-"ENABLE"-"DISABLE".



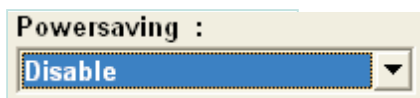
- a. "ENABLE"-to remote match safe code SN number of transmitter and receiver.
 - a-1. Transmitter and receiver must be same type and same CH number.
 - a-2. Power On the receiver. Press and release the STOP button of transmitter, then press UP and do not release it, then press and release DOWN four times. Then it is finished. These steps should be finished within 4 minutes.
- b. "disable", can change SN number by software or copier.

2-25. "Power On Mode": "Any pushbutton" and "Start pushbutton/Key".



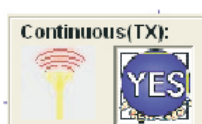
- a. "Any pushbutton". ON mean Main relay of receiver is on.
Release STOP button, put rotary switch "start" (F21-2S/D, F21-4S/D, F21-E1B, release STOP button, put the magnetic key on), then press any button to power on the device.
- a. "Start pushbutton/Key". Release STOP button, put rotary switch "start" (F21-2S/D, F21-4S/D, F21-E1B, release STOP button, put the magnetic key on), then press START button to power on the device.

2-26. "Powersaving". "ENABLE" OR "DISABLE".



- a. "ENABLE". It allow Max. 5 remote controls with same CH number(frequency) but different SN number in same working area.
In same area, the less number of same frequency remote controls, the less interferences between them. Power saving mode is save 40% energy. The working distance is shorted by 50%.
- b. "DISABLE". Power saving is disabled.

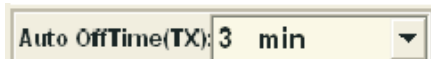
2-27. "Continuous (TX)". "YES" or "NO"



- a. "YES". After Start the remote, the transmitter is keeping sending signals no matter if other buttons are pressed.
- b. "NO": After "Start", the transmitter does not send signal if no buttons is pressed.

2-28. "AutoOffTime (TX)".

"Continuous (TX)". "YES" then "AutoOffTime (TX)" can choose auto off time ("Off" mean the main relay of receiver is OFF).



a. "AutoOffTime" The systems is off after certain times of off-woringking.

2-29. "Auto-Off (EMS)", when auto off is enabled, the receiver is off at the same time or not.



2-30. "LED-On/Off".



a. "YES". During normal operation, Led is green. LED is red when it is alarm or error. e.g.(When power is not enough, red is flash)

b. "NO": LED isoff during normal operation. Led is red when alarm or error.



2-31. "LED-Off Time" Can be set from 0~4seconds.Short time means more power consumption. LED on time is always 0.4 second. When you choose 1 second, then LED on is for 0.4 second, LED off is for 1 second. On and off is cycled.

2-32. "READ R/C". To read out the functions.



2-33. "WRITE R/C". Write in the functions.



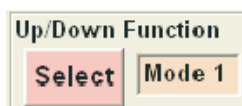
2-34. "Model".

Model : F21-E1

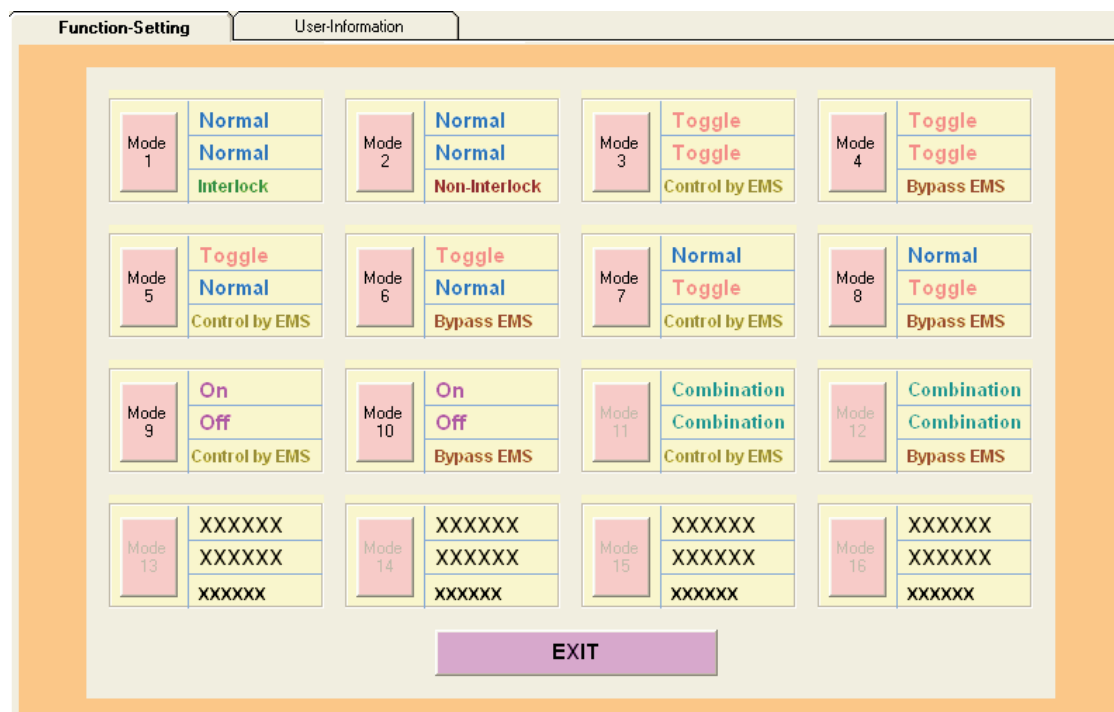
2-35. "ID-Code". The unique and non-repeated ID code. The ID code must keep same in transitter and receiver.

ID-Code: C166002E

2-36. "button function". Click "select".



2-37. "Mode" include "Normal", "Interlock", "Non Interlock", "Toggle", "Control by EMS", "By pass EMS", "ON", "OFF", "Combinatin".



- a. "Normal". Press button, ON. Release button, off.
- b. "Interlock". When choose UP DOWN to be Normal and Interlock, then they do not work together.
- c. "Non Interlock". When choose UP DOWN to be Normal and Non Interlock, then they can work together.
- d. "Toggle". Press and release, relay is ON. Press and release again, relay is OFF.
- e. "Control by EMS". When press STOP or main relays is off, the according relays are off.
- f. "By pass EMS": When press STOP or main relays is off, the according relays keep same. It is usually used for electric magnetic chuck.
- g. "ON" and "OFF": On, when you press this button, the relay is ON.
- h. "Combination": When you press two buttons with combination function, it output another extra function, such as: light etc. But usually, there is time differences between two buttons. In such way, the first pressed button will act as normal function till two buttons are pressed, then it output extra functions. It is toggle.

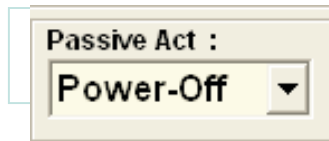
2-38. "Interlock delay": When interlock is chosen, please program the interlock delay time (0-4s) based on your requirement. For example, after release UP button, the motor cannot stop at once. At this time, if you press DOWN, the motor would be damaged. Interlock delay time is to protect the machines.



2-39. "Acceleration delay": For two steps button with normal function. When you change one speed to another speed, the relay will delay 0-4s based on the setting. This is used to protect motor.



2-40. "Passive act: The receive is interfered on operation, it will be "Power off " or "relay off".



a. "Power off means that the main relay is off. Need start mode again.

b. "Relay off means that the main relays is on, the buttons of normal function are off. No need start mode again.

2-41. "Auto off (RX) , choose YES, the system is off if there is no signal received during auto off time.
NO means auto off is disabled.



2-42. "Auto off time (RX) , After choose auto off YES, then you should set the auto off time or not execute.



2-43. "EXIT to exit the program.



Notes: 1. After change the function, you must WRITE IN the program to the transmitter and receiver.

2. The distributor should READ OUT the data of transmitter and receiver to save it in computer. It can used for copying new products in future. The system also can record customers' business information.

TELEcontrol

UTING ELECTRONICS GROUP CO.,LTD(SEYCHELLES)

UTING 禹鼎TM

NINGBO UTING ELECTRONIC CO.,LTD

中國 寧波 Ningbo,china

電話(Tel):86-574-87164091 87164092

傳真(Fax):86-574-87150953

[Http://www.uting-china.com](http://www.uting-china.com)

E-mail:sales@uting-china.com china@uting-china.com