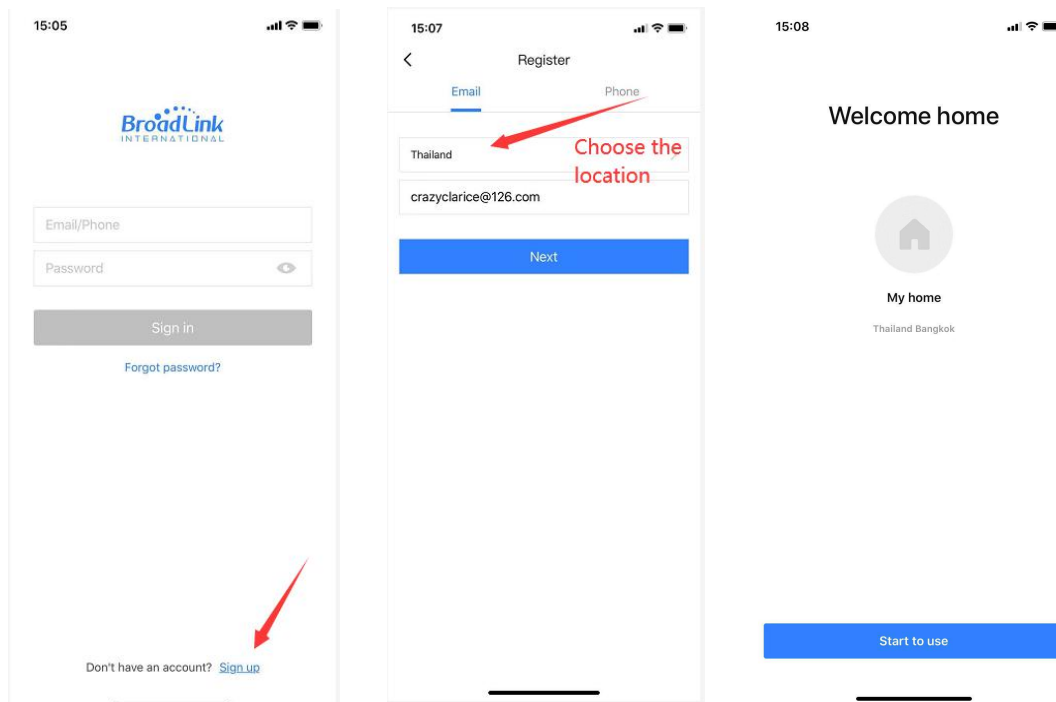
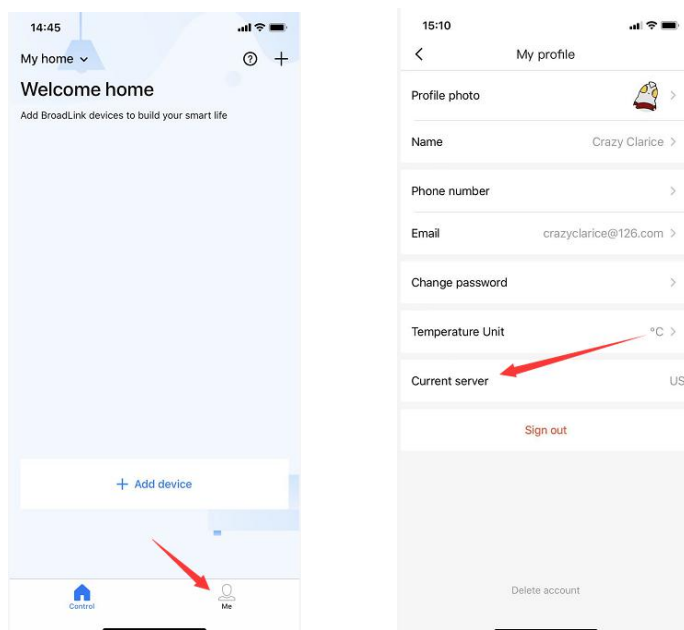


# Configuration Manual of RM4 mini

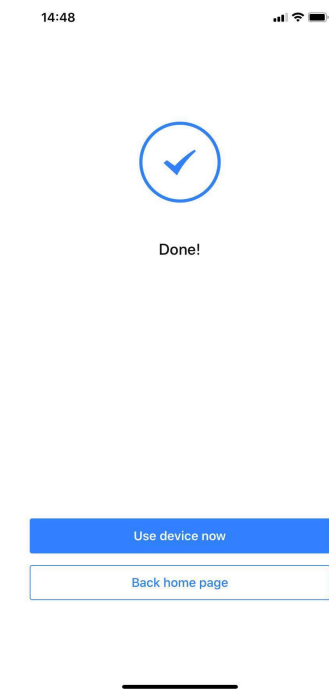
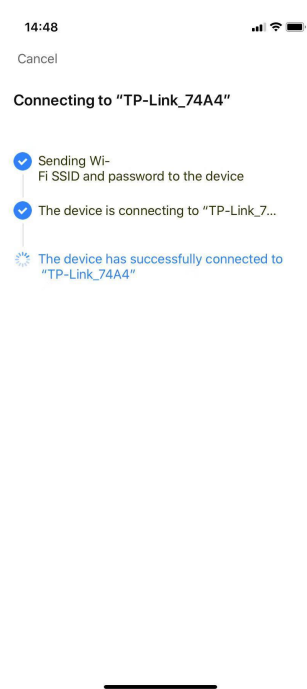
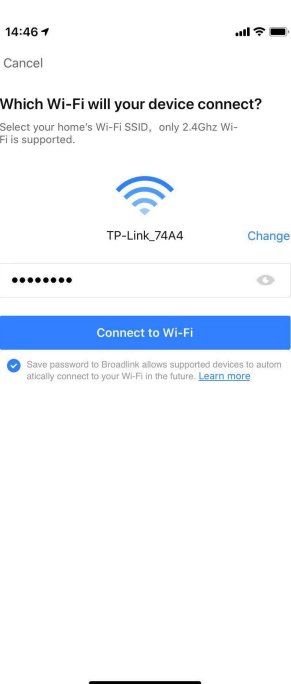
1. Preparations: All users need to set up a new account when first time use BroadLink APP. This step will help you to find the right sever. (EU countries use EU sever, countries other than the EU all use the US sever.)



You can check in "My Profile" to confirm if you connect to the right sever.



2. Add device. Following the instructions in APP to add device.



Tips: 1) Make sure the LED indicator flashes quickly (2-3 times/sec.)

2) Make sure you are using a 2.4G WI-FI.

3) Watch out the state of the indicator: The LED indicator flashes from quickly to slowly then off, means device is being configured and then added to network successfully.

4) You can change the Home Location by reset the account in APP. Just a simple verification with your mail box or phone number is OK.

